



Great Magtech (Xiamen) Electric Co.,Ltd

Magnetic Separator Conveyor

Since 2015



Tel: +86-592-6682467

E-mail: sales@greatmagtech.com

Mob/Wechat/Whatsapp: +86-13850081554

Website: <https://www.greatmagtech.com>

<https://www.gme-magnet.com>

Address: 5F, No.601 Hengtian Rd, Jimei District, Xiamen, China (361024)



Magnetic Separators in Mining Industry

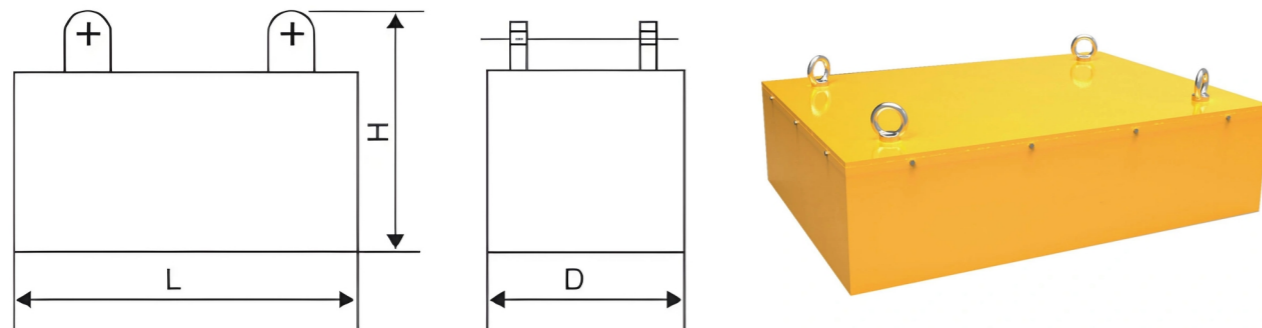
Magnetic separation is most commonly used in the mining industry to separate “tramp ore,” or unwanted waste metals, from the rest of the bulk material. Magnetic separation machines are usually placed at the beginning of a mine’s materials processing line to remove tramp ore before it can cause harm to “downstream” equipment such as ore crushers and conveyor belts, which can be easily damaged by metal shards or other sharp objects.



RCYB Suspension Permanent Magnet

Features

1. high performance, high magnetic field strength, and high suction force.
2. High-performance NdFeB material is the magnetic source, has high coercivity, is not easy to demagnetize, and has been demagnetized by not more than 4% in eight years.
3. No energy consumption, energy saving, and environmental protection, continuous operation without failure in harsh environments.
4. Small volume, lightweight, and easy to install.



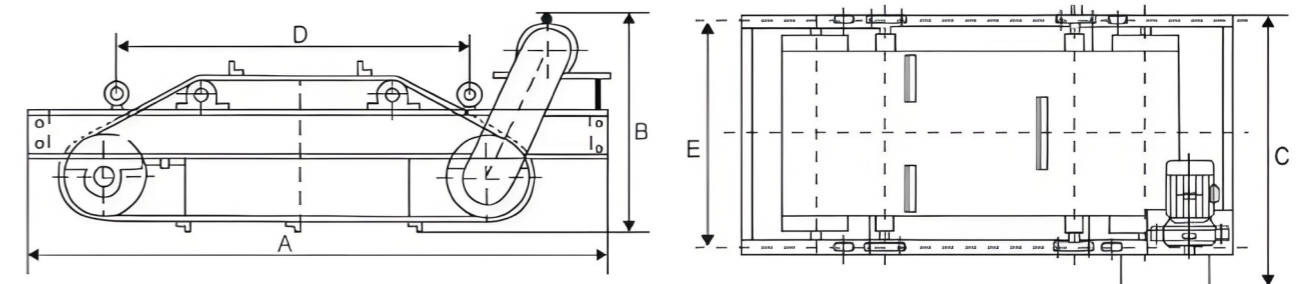
Specification parameter

Model	Belt Width (mm)	Suspension Height (h=mm)	Material Depth (≤mm)	Magnetic field intensity ≥mT	Belt Speed (≤m/s)	Weight (kg)	Appearance size(mm)		
							L	D	H
RCYB-4	400	130	80	63	4.5	115	400	300	210
RCYB-5	500	150	100	63		180	500	400	230
RCYB-6	600	180	130	63		300	600	500	250
RCYB-6.5	650	200	150	65		450	650	600	250
RCYB-8	800	250	200	70		580	800	700	250
RCYB-10	1000	300	250	70		880	1000	800	250
RCYB-12	1200	350	300	70		1100	1200	1000	270
RCYB-14	1400	400	350	70		1700	1400	1300	270
RCYB-16	1600	450	400	70		2200	1600	1500	270
RCYB-4P	400	80	30	45		4.5	65	400	300
RCYB-5P	500	100	50	50	110		500	400	160
RCYB-6P	600	150	100	50	175		600	500	186
RCYB-6.5P	650	180	130	50	280		650	600	186
RCYB-8P	800	200	150	50	420		800	600	186

RCYD Self-Cleaning Permanent Magnetic Separators

Features

1. Magnetic circuit design using computer simulation, perfect double pole structure.
2. NdFeB material is the magnetic source, with high coercivity, and high magnetic field strength.
3. Automatic clean iron, easy maintenance, wide application.
4. Transmission drum with drum-type structure, the belt automatic correction function.
5. Dustproof housings, low mechanical failure.



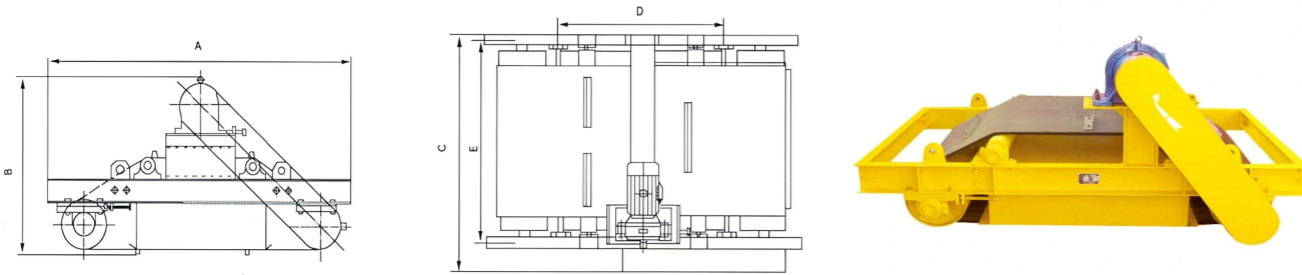
Specification parameter

Model	Belt Width (mm)	Suspension Height (h=mm)	Magnetic field intensity ≥mT	Material Depth (≤mm)	Driving power (Kw)	Belt spee (≤m/s)	Work hour	Weight Kg	Appearance size(mm)				
									A	C	B	E	D
RCYD(C)-5	500	150	70	80	1.5	4.5	Continuous	750	1900	935	735	753	950
RCYD(C)-6	600	175	70	120	1.5			920	2050	1030	780	840	1100
RCYD(C)-6.5	650	200	70	150	1.5			1200	2050	1080	780	888	1200
RCYD(C)-8	800	250	70	200	2.2			1400	2250	1280	796	1088	1300
RCYD(C)-10	1000	300	70	250	3			2120	2650	1550	920	1335	1400
RCYD(C)-12	1200	350	70	300	4			3350	2860	1720	1010	1515	1550
RCYD(C)-14	1400	400	70	350	4			4450	3225	1980	1050	1755	1800
RCYD(C)-16	1600	450	70	400	5.5			6200	3350	2160	1180	1850	1950
RCYD(C)-18	1800	500	70	450	5.5			8100	3580	2450	1210	2130	2200
RCYD(C)-20	2000	550	70	500	7.5			9700	3800	2700	1300	2410	2400

RCYPII Self-Cleaning Permanent Magnetic Iron Separators

Features

1. The magnetic circuit is designed by computer simulation, with a perfect double magnetic pole structure, high magnetic field intensity, large gradient, and large suction force.
2. High-performance NdFeB is used as the magnetic source, which has a high magnetic energy product and is not easy to demagnetize. The demagnetization does not exceed 5% in eight years.
3. The drum-shaped drum structure has an automatic deviation correction function, a fully sealed bearing seat, good sealing performance, and can adapt to various harsh environments.
4. Compact structure, suitable for occasions with limited installation space.
5. The control part can be interlocked with the belt conveyor to realize local manual control and centralized control.



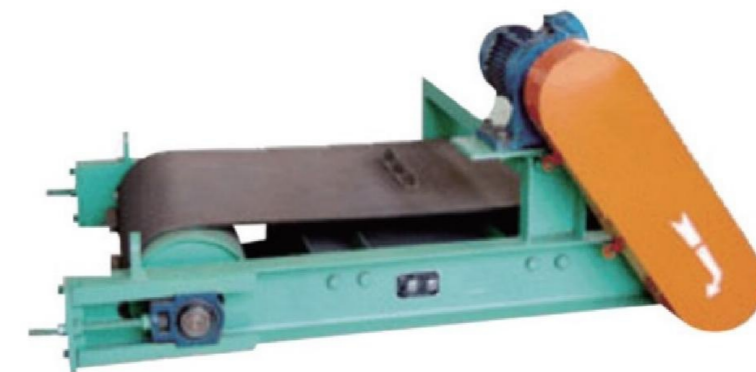
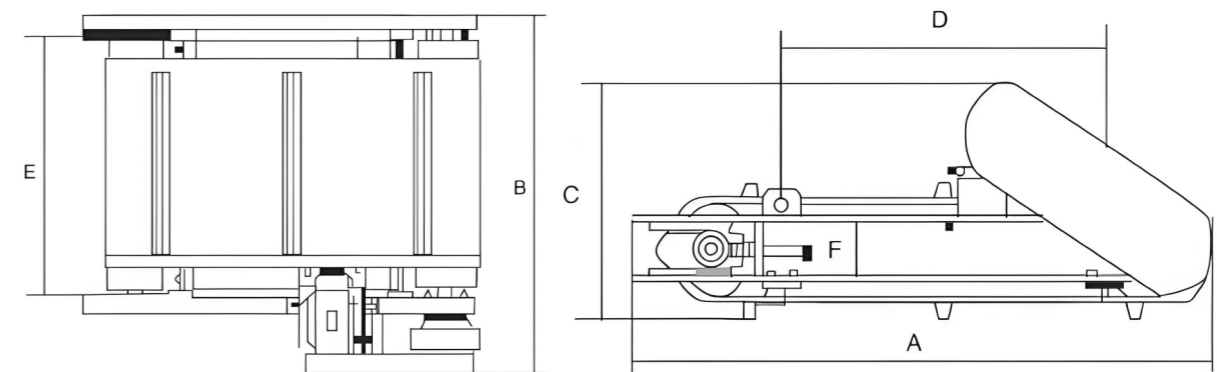
Specification parameter

Model	Belt Width (mm)	Suspension Height (h=mm)	Magnetic field intensity \geq mT	Material Depth (\leq mm)	Driving power (Kw)	Belt spee (\leq m/s)	Weight (kg)	Appearance size(mm)				
								A	B	C	D	E
RCYP II-5	500	150	70	80	1.5	4.5	720	1550	850	936	950	755
RCYP II-6	600	175	70	125	1.5		900	1700	895	1020	1000	835
RCYP II-6.5	650	200	70	150	2.2		1060	1750	895	1075	1050	888
RCYP II-8	800	250	70	200	2.2		1180	1940	935	1280	1200	1088
RCYP II-10	1000	300	70	250	3		1820	2170	1050	1530	1400	1315
RCYP II-12	1200	350	70	300	4		2500	2450	1140	1740	1500	1510
RCYP II-14	1400	400	70	350	4		3550	2680	1140	1920	1600	1780
RCYP II-16	1600	450	70	400	5.5		4860	2850	1215	2140	1750	1860
RCYP II-18	1800	500	72	450	7.5	5950	3380	1290	2420	2010	2120	

RCYQ Magnetic Separator Conveyor Belts

Features

1. Light weight, small volume, low weight.
2. Compact structure, few components, easy maintenance, convenient hoisting, economical and practical.
3. Lower noise and continuous work.
4. Optional magnetic force at SHR: 500Gs, 700Gs, 1200Gs, 1500Gs or more.



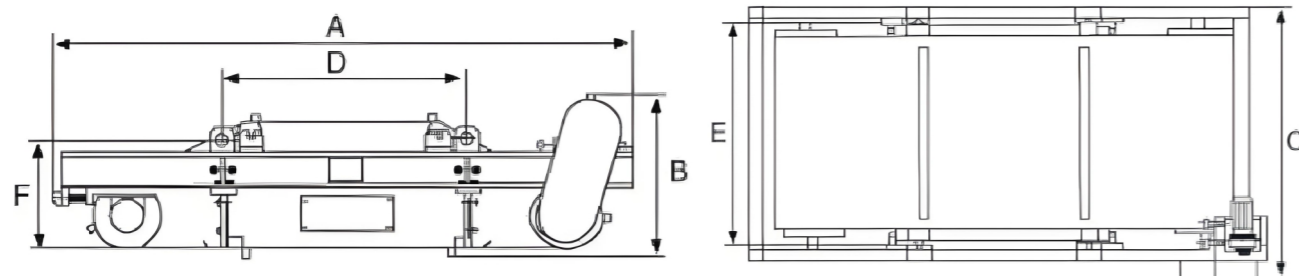
Specification parameter

Model	Belt Width (mm)	Suspension Height (h=mm)	Magnetic field intensity \geq mT	Belt speed (\leq m/s)	Iron absorption capacity (kg)	Work hour	Weight Kg	Driving power (Kw)	Appearance size(mm)					
									A	B	C	D	E	F
RCYPQ-4	400	100	40	2	0.1-6	Conti	380	0.75	1270	840	540	1050	580	270
RCYPQ-5	500	150	50	2.5			490	0.75	1322	1006	615	622	672	270
RCYQ-6.5	650	200	50	2.5			640	1.1	1545	1150	710	1300	830	270
RCYQ-8	800	250	60	3.15	0.1-12	nuous	850	1.5	1712	1385	735	972	1022	270
RCYQ-10	1000	300	60	4			1300	2.2	1882	1535	735	1122	1112	270

RCYK Armoring Permanent Magnet Separator

Features

1. Unique design armored belts can effectively prevent sharp ferromagnetic debris to damage the belt and operating economy.
2. The intensity of the rated height is high, the gradient is large, and the suction is strong.
3. No electricity, power saving, automatic unloading iron, easy to operate.
4. Rare Earth NdFeB permanent magnet material as a magnetic source, and the magnetic properties are stable and reliable.
5. With belt automatic template, and special sealing bearing housing, adapt to working under harsh environments.
6. The structure is compact and easy to maintain, which can operate a long-term operation.
7. Complete specifications, there is a general type of national standard and superior shape higher than national standards and an explosion-proof type.



Specification parameter

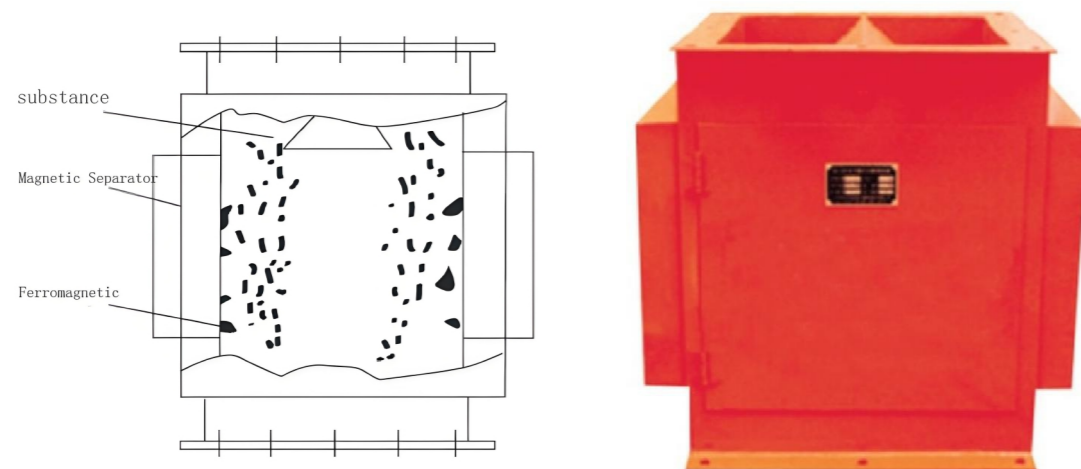
Model	Belt Width (mm)	Suspension Height (h=mm)	Magnetic field intensity \geq mT	Belt spee (\$m/s)	Absorb capacity (kg)	Operating mode	Driving power (Kw)	Appearance size(mm)						Weight Kg
								A	B	C	D	E	F	
RCYK-5	500	150	≥ 70	≤ 4.5	0.1-36	Continuous	1.5	1900	735	935	950	753	451	750
RCYK-6.5	650	200					2.2	2050	780	1030	1100	753	451	1200
RCYK-8	800	250					2.2	2350	796	1280	1300	1068	451	1400
RCYK-10	1000	300					3	2660	920	1550	1400	1335	451	2120
RCYK-12	1200	350					4	2860	970	1720	1550	1515	516	3350
RCYK-14	1400	400					4	3225	1050	1980	1800	1755	516	4450
RCYK-6.5	650	200	90	≤ 4.5	0.1-50	Continuous	1.5	2160			1200	890		1300
			120				2.2	2160	1075	795	1200	890	451	1420
			150				2.2	2310			1300	890		1750
RCYK-8	800	250	90				2.2	2350			1300	1090		1920
			120				2.2	2350	1280	795	1300	1090	451	2180
			150				3	2520			1400	1090		2820
RCYK-10	1000	300	90	3	2660			1400	1335		2350			
			120	3	2660	1540	950	1400	1335	451	2700			
			150	4	2760			1400	1335		3680			
RCYK-12	1200	350	90	4	2900			1600	1515		3250			
			120	4	2900	1730	970	1600	1515	516	4100			
			150	5.5	2900			1600	1515		5150			
RCYK-14	1400	400	90	4	3225			1900	1750		4800			
			120	5.5	3225	1980	1180	1900	1750	516	5620			
			150	5.5	3340			1900	1750		7450			

Note: This model has a super strong model, the magnetic field strength of T1 type is 90mT, T2 type is 120mT, and T3 type is 150 mT.

RCYF Pipeline Magnetic Separator

Features

1. It was made up of high remanence and high coercivity rare earth permanent magnet NdFeB material.
2. Unique magnetic circuit design, double magnetic pole structure, the magnetic field of material passing through the field is greatly deepened, and the suction is 2-3 times compared with the ordinary pipe.
3. Small volume, lightweight, low energy consumption, compact structure, reliable operation,
4. Low failure rate and convenient maintenance.
5. Vertical installation, separating iron conveniently.
6. Sealing structure and energy saving.



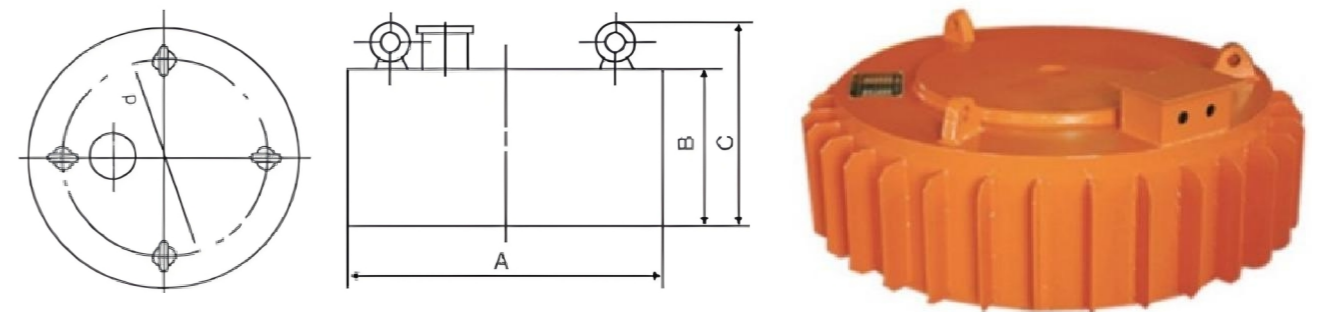
Specification parameter

Model	Capacity (t/h)	Appearance size (mm)	Permanent magnet size (mm)	Flange interface Dimensions (mm)	To adapt to the angel of slope and the ground
RCYF-15	15	300×300×600	300×250×80	360×360	90°C
RCYF-30	30	400×400×700	400×300×85	460×460	
RCYF-50	50	500×500×800	500×400×85	600×600	
RCYF-100	100	600×600×1000	600×450×180	700×700	
RCYF-200	200	700×700×1200	700×500×210	840×840	
RCYF-300	300	800×800×1400	800×700×210	940×940	

RCDB Dry Electromagnetic Separator

Features

1. Sustain and reliable magnetic field, with strong magnetic force.
2. Compact structure, lightweight, and easy maintenance.
3. Featuring with dust and rain protection, wearing erosion, it can run in a harsh environment.
4. Low energy consumption and reliable performance. Optional magnetic force: 500Gs, 700Gs, 1200Gs, 1500Gs or more.



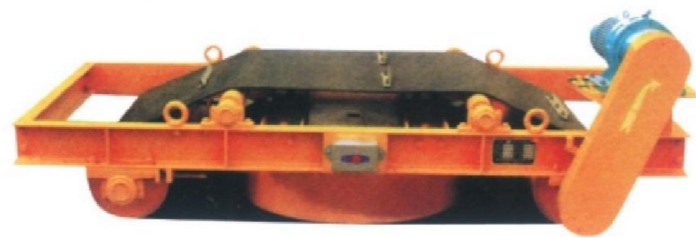
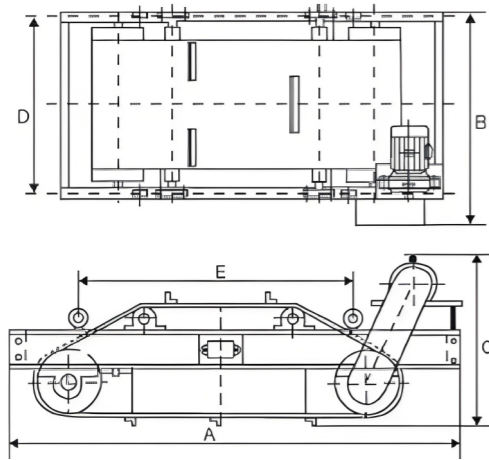
Specification parameter

Model	Belt Width (mm)	Suspension Height (h=mm)	Material Depth (≤mm)	Magnetic field intensity ≥mT	Driving power (Kw)	Belt speed (≤m/s)	Operating mode	Weight Kg	Appearance size(mm)		
									A	B	C
RCDB-4	400	120	70	50	0.6	4.5	contin uous	250	500	240	280
RCDB-5	500	150	100	60	1			430	600	250	310
RCDB-6	600	180	130	63	1.6			580	610	270	340
RCDB-6.5	650	200	150	70	2			680	720	270	340
RCDB-8	800	250	200	70	3.6			950	960	275	335
RCDB-10	1000	300	250	70	5			1520	1200	320	420
RCDB-12	1200	350	300	70	6.8			2250	1400	370	470
RCDB-14	1400	400	350	70	9			2950	1650	405	500
RCDB-16	1600	450	400	70	13			4800	1900	460	560
RCDB-18	1800	500	450	70	18			6900	2150	570	630
RCDB-20	2000	500	500	70	20			7500	2300	580	680

RCDD Self-Cleaning Electricmagnetic Tramp Iron Separator

Features

1. The computer simulates design in magnetic circuit, and strong magnetic force.
2. The inside uses special resin to cast with a wholly sealed structure.
3. Self-cleaning, easy maintenance, drum-shaped structure, automatic belt-off-position correct.
4. Remote and site control.
5. Eliminate the ferrous material with a weight of 0.1-50kg.



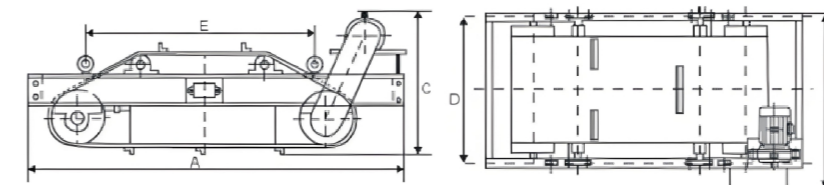
Specification parameter

Model	Belt Width (mm)	Suspension Height (h=mm)	Material Depth (≤mm)	Excitation power (Kw)	Magnetic intensity (≥mT)	Driving power (Kw)	Belt speed (≤m/s)	Weight Kg	Appearance size(mm)				
									A	B	C	D	E
RCDD-5	500	150	100	1.2	60	1.5	4.5	950	2020	1040	775	750	1000
RCDD-6	600	175	120	2	60	1.5		1380	2140	1100	800	800	1100
RCDD-6.5	650	200	150	3	70	2.2		1490	2275	1190	820	888	1250
RCDD-8	800	250	200	4	70	2.2		1770	2540	1480	865	1030	1350
RCDD-10	1000	300	250	6	70	3		2380	2750	1635	940	1230	1400
RCDD-12	1200	350	300	8	70	3		3170	3000	1800	1010	1505	1700
RCDD-14	1400	400	350	12	70	4		4800	3500	2050	1050	1674	2000
RCDD-16	1600	450	400	14	70	4		6300	3900	2450	1180	1874	2350
RCDD-18	1800	500	450	20	70	5.5		7800	4400	2850	1290	2100	2800

RCDC Fan-Cooling Self-Cleaning Electromagnetic Separator

Features

1. It is mainly used in situations where the iron content in the material is high, there by avoiding the trouble of manual power outages and frequent unloading of iron.
2. The magnetic circuit is designed using computer simulation, with a large magnetic penetration depth and strong magnetic force.
3. It adopts forced air cooling by axial flow fan, special air duct design, strong wind power and high wind pressure, fast heat dissipation of the excitation coil, low temperature, and small magnetic field fluctuation.
4. It has automatic iron unloading and easy maintenance. The transmission drum adopts a waist-drum knot structure, has a belt deviation correction function, and is a dust-proof bearing seat. Mechanical failure is low.
5. Adopting low-voltage power supply mode, the failure rate is low.



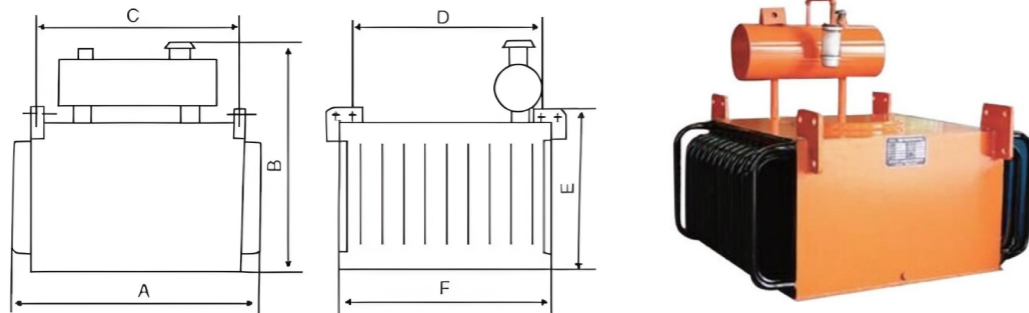
Specification parameter

Model	Belt Width (mm)	Suspension Height (h=mm)	Material Depth (≤mm)	Excitation power (Kw)	Magnetic intensity (≥mT)	Driving power (Kw)	Belt speed (≤m/s)	Weight Kg	Appearance size(mm)				
									A	B	C	D	E
RCDC-5	500	150	100	1.2	60	1.5	4.5	1050	1800	965	720	750	1030
RCDC-6	600	180	120	2	60	1.5		1350	2000	1170	810	800	1150
RCDC-6.5	650	200	150	3	70	2.2		1550	2100	1370	820	888	1233
RCDC-8	800	250	200	4	70	2.2		2160	2300	1420	860	1031	1300
RCDC-10	1000	300	250	6	70	3		3380	2600	1700	880	1231	1500
RCDC-12	1200	350	300	8	70	3		4150	3000	1850	950	1505	1700
RCDC-14	1400	400	350	12	71	4		5500	3000	2070	1020	1674	1950
RCDC-16	1600	450	400	14	71	4		6900	3600	2270	1050	1874	2400
RCDC-18	1800	500	450	20	73	5.5		8900	4300	2570	1160	2100	2850
RCDC-20	2000	500	500	30	73	5.5		10500	4600	2750	1300	2200	3100

RCDE Oil-Cooling Electromagnetic Separators

Features

1. The magnetic circuit is designed using computer simulation, with large magnetic penetration depth and strong magnetic force.
2. Fully sealed structure, the coil adopts a special winding method, oil circulation heat dissipation, low-temperature rise, long life, dustproof, rainproof, and corrosion resistance.
3. Trouble-free and continuous operation in harsh environments.
4. The coil insulation is grade F or above, and a new type of thermally conductive insulating oil is used.
5. The iron remover adopts corrugated heat sinks to increase the heat dissipation area and effectively control temperature rise.



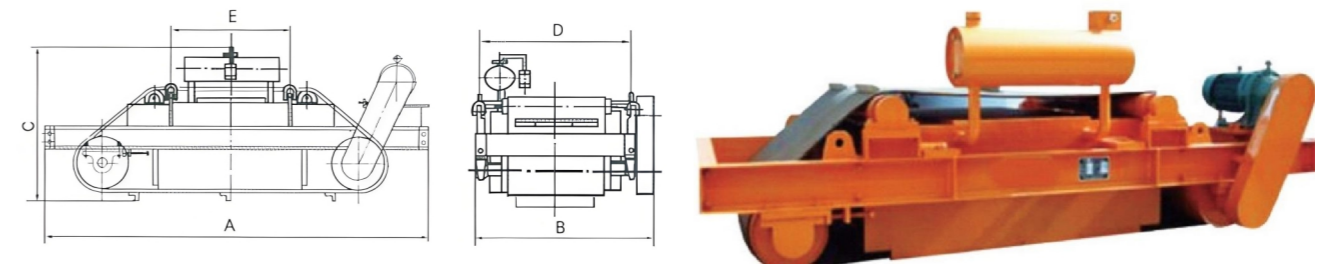
Specification parameter

Model	Belt Width (mm)	Suspension Height (h=mm)	Magnetic intensity \geq mT	Material Depth (\leq mm)	Excitation power \leq kw	Belt speed (\leq m/s)	Weight Kg	Appearance size(mm)				
								A	F	B	C	D
RCDE-5	500	150	65	100	1.1	4.5	500	700	600	750	440	450
RCDE-6	600	175	65	120	1.6		640	800	700	820	540	550
RCDE-6.5	650	200	70	150	3		750	850	700	825	590	550
RCDE-8	800	250	70	200	5		1200	1020	750	950	750	600
RCDE-10	1000	300	70	250	7		1500	1400	1200	1130	1000	1050
RCDE-12	1200	350	70	300	9		2650	1650	1350	1180	1450	1170
RCDE-14	1400	400	72	350	12		4350	1760	1630	1250	1670	1250
RCDE-16	1600	450	72	400	16		5650	1900	1900	1350	1950	1580
RCDE-18	1800	500	75	450	22		7200	2250	2050	1470	2200	1790
RCDE-20	2000	550	75	500	30		8350	2450	2150	1600	2350	2100

RCDF Self-Cleaning Oil-Cooling Electromagnetic Separator

Features

1. The computer simulates design in magnetic circuits and strong magnetic force.
2. The excitation coil adopts advanced dipping and curing technology and is completely immersed in transformer oil. It not only has a large heat dissipation area but also has smooth and reasonable oil circuits.
3. The temperature rise is extremely low(\leq 50C), and it has excellent moisture-proof, dust-proof, and anti-corrosion properties which greatly increase the service life of the coil.
4. Self-cleaning, easy maintenance, drum-shape structure, automatic belt-off-position correct.
5. Fully functional, with manual and centralized control, which can meet the requirements for use on various occasions.



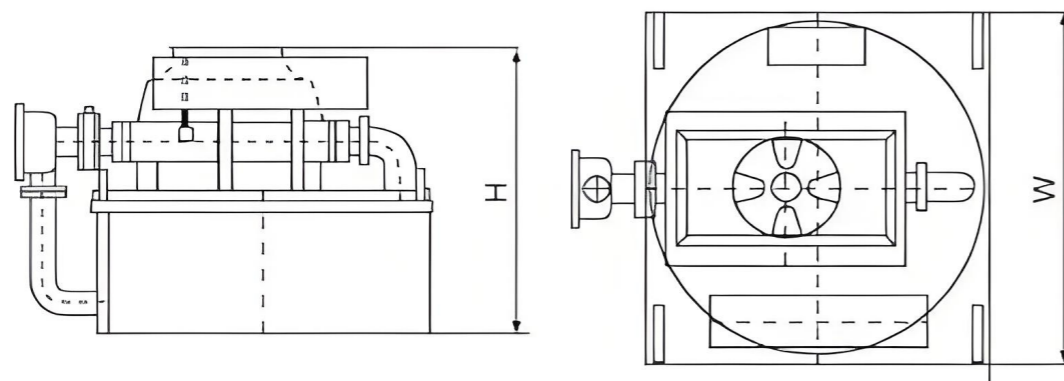
Specification parameter

Model	Belt Width (mm)	Suspension Height (h=mm)	Material Depth (\leq mm)	Excitation power \leq kw	Magnetic intensity \geq mT	Driving power (Kw)	Belt speed (\leq m/s)	Weight Kg	Appearance size(mm)				
									A	B	C	D	E
RCDF-5	500	150	100	1.2	60	1.5	4.5	1100	1900	900	800	650	1050
RCDF-6	600	180	130	1.8	60	1.5		1500	2050	1000	850	700	1170
RCDF-6.5	650	200	150	2	70	1.5		1800	2165	1050	900	750	1270
RCDF-8	800	250	200	3	70	2.2		2500	2350	1150	970	810	1420
RCDF-10	1000	300	250	4.5	70	3		3550	2660	1400	1080	810	1580
RCDF-12	1200	350	300	6.5	70	4		4650	2860	1500	1200	940	1780
RCDF-14	1400	400	350	8.5	70	4		6290	3225	1945	1300	940	1950
RCDF-16	1600	450	400	13	70	5.5		7850	3550	2010	1400	940	2180
RCDF-18	1800	500	450	18	70	5.5		9100	3650	2400	1500	940	2315
RCDF-20	2000	500	500	20	70	5.5		9500	3850	2800	1600	940	2400

RCDEQ-□T Forced Oil Circulation Electromagnetic Separators

Features

1. Absorbing the advanced oil forced circulation technology for the large or medium transformer both at home and abroad, it features low temperature ($\leq 40^{\circ}\text{C}$) rising and the technology is reliable and safe.
2. The magnetic route is short, magnetic waste is less, the gradient is high, and iron is efficient.
3. Lightweight reasonable oil line, compact cooling structure, and high heat-releasing efficiency.
4. The exciting coil is completely dipped into the transformer oil to be dustproof, moisture-proof, and anti-corrosion.
5. Made three-dimensional excitation coil winding, the area for heat releasing is large to control the temperature ($\leq 40^{\circ}\text{C}$) for long service life.



Specification parameter

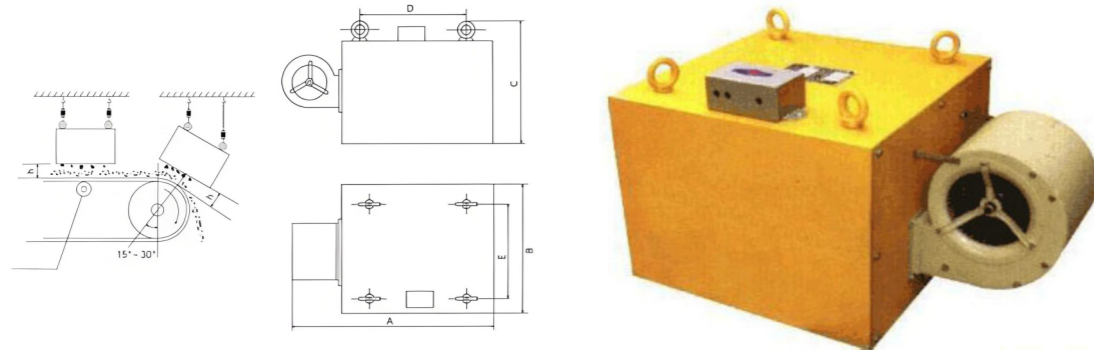
Model		Belt Width (mm)	Suspension Height (h=mm)	Magnetic intensity \geq mT	Excitation power \leq kw	Condenser Power (kw)	Appearance size L×W×H(mm)	Belt speed (\leq m/s)	Weight (kg)
RCDEQ-10	T1	1000	300	90	6.5	0.25	1300×1300×1210	5.8	2600
	T2			120	9.5		1300×1300×1250		2950
	T3			150	15		1350×1350×1280		3470
RCDEQ-12	T1	1200	350	90	9		1350×1350×1250		2900
	T2			120	14		1350×1350×1280		3500
	T3			150	20		1600×1600×1380		5400
RCDEQ-14	T1	1400	400	90	14		1350×1350×1280		3000
	T2			120	20		1600×1600×1420		5500
	T3			150	29		1830×1830×1450		7460
RCDEQ-16	T1	1600	450	90	18		1600×1600×1420		5400
	T2			120	28		1830×1830×1450		7500
	T3			150	32		1950×1950×1480		8550
RCDEQ-18	T1	1800	500	90	26	1850×1850×1480	7600		
	T2			120	32	1950×1950×1480	8600		
	T3			150	40	2060×2060×1500	10500		
RCDEQ-20	T1	2000	550	90	30	2000×2000×1480	8800		
	T2			120	39	2100×2100×1500	10600		
	T3			150	41	2260×2260×1500	12500		
RCDEQ-22	T1	2200	600	90	39	2060×2060×1500	10500		
	T2			120	42	2260×2260×1520	12800		
	T3			150	45	2500×2500×1520	13500		
RCDEQ-24	T1	2400	650	90	40	2260×2260×1520	13000		
	T2			120	46	2450×2450×1550	15200		
	T3			150	54	2650×2650×1580	17500		

Note: This model has a super strong model, the magnetic field strength of T1 type is 90mT, T2 type is 120mT, and T3 type is 150 mT.

RCDA Suspended Air-Cooled Electromagnetic Separation

Features

1. It is used to remove iron from any material on the conveyor belt and plays a reliable role in protecting various types of crushers, mills, and other equipment.
2. Computer simulation design.
3. Simple structure and easy maintenance.
4. The magnetic field is strong, the power is large, and the magnetic penetration depth is large.
5. The axial flow fan has a good heat dissipation effect and the temperature rise of the electromagnetic coil is low.



Specification parameter

Model	Belt Width (mm)	Suspension Height (h=mm)	Material Depth (≤mm)	Excitation power ≤kw	Magnetic intensity ≥mT	Driving power (Kw)	Belt speed (≤m/s)	working system	Weight Kg	Appearance size(mm)			
										A	B	C	D E
RCDA-4	400	120	70	0.6	50	0.15	4.5	continuity	350	620	400	360	240
RCDA-5	500	160	110	1	60	0.15			450	710	500	450	340
RCDA-6	600/650	180	130	1.6	60	0.15			620	910	600	480	400
RCDA-6.5	650	200	150	2	70	0.37			750	990	650	500	450
RCDA-8	800	250	200	3	70	0.37			980	1080	800	600	600
RCDA-10	1000	300	250	5	70	0.45			1330	1400	1000	670	800
RCDA-12	1200	350	300	6.5	70	0.45			1950	1600	1200	750	1000
RCDA-14	1400	400	350	10	70	0.8			2870	1910	1400	780	1200
RCDA-16	1600	450	400	15	70	0.8			3800	2010	1600	810	1400
RCDA-18	1800	500	450	20	70	1.3			4500	2360	1800	930	1600
RCDA-20	2000	550	500	25	70	1.3			6900	2560	2000	980	1800

RCGZ Conduit Self-Cleaning Iron Separator

Features

1. The deformation shell rotates for the magnetic system, which increases the structure of the magnetic system from the structure.
2. Material separation is more thorough. Use high-temperature resistance. With strong magnetic NdFeB magnetic material and high magnetic field strength, the whole machine is connected in series to the powder conveying pipe.
3. Medium and flange connection, easy installation. Iron removal and iron removal are done automatically. The equipment does not require special care, and the permanent magnet is used as the magnetic source.
4. There is No power, low power, low electrode consumption, compact structure, stable and reliable structure.



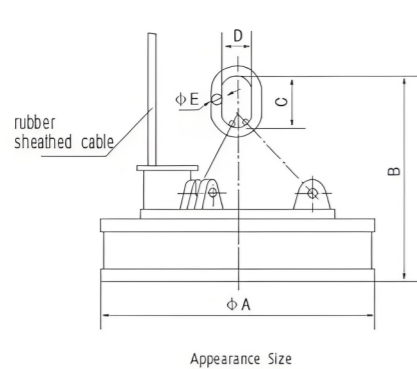
Specification parameter

Model	Processing Power (t/h)	Material Size (≤mm)	Motor Power (kw)	Working Method	Weight (kg)
RCGZ-100	80-120	30	0.37	Continuous automatic	320
RCGZ-150	130-160	50	0.37		380
RCGZ-200	180-220	80	0.55		560
RCGZ-400	350-450	100	1.1		1100
RCGZ-600	550-650	120	1.5		1500
RCGZ-800	720-880	150	2.2		1800
RCGZ-1000	900-1100	200	3		2200

MW5 Electric Crane Magnetic Lifter For Lifting Scraps

Features

1. Lightweight and large lifting capacity. The coil is made of aluminum wire, and a unique magnetic circuit design is used to reduce its weight.
2. Simple structure, safe and reliable, suitable for all kinds of lifting equipment.
3. In addition to using constant voltage, strong magnetic mode can also be used. It can not only improve the lifting capacity but also improve the economic benefits.



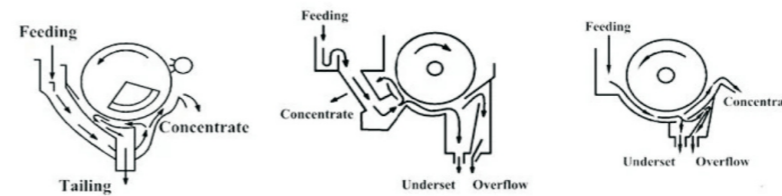
Specification parameter

Model		Mw5-70L/1	Mw5-80L/1	Mw5-90L/1	Mw5-110L/1	Mw5-120L/1	Mw5-130L/1	Mw5-150L/1	Mw5-165L/1	Mw5-180L/1	Mw5-210L/1	Mw5-240L/1	
Overall dimension (mm)	A	700	800	900	1100	1200	1300	1500	1650	1800	2100	2400	
	B	850	900	1090	1140	1150	1240	1250	1590	1490	1860	2020	
	C	160	160	200	220	220	250	350	370	370	400	450	
	D	90	90	125	150	150	175	210	230	230	250	280	
	E	32	30	40	50	45	60	60	75	75	80	80	
Weight	Kg	500	620	810	1350	1700	2100	2800	3200	4200	7020	9000	
Electric current	A	15	18	26.6	35	45.5	54	71.2	75	102.4	123	154	
Cold-state power	Kw	3.3	3.96	5.86	7.7	10	11.9	15.6	15.6	22.5	27	33.6	
lifting capacity	steel ball	2500	3000	4500	6500	7500	8500	11000	12500	14500	21000	26000	
	cast iron	380/200	480/250	600/400	1000/800	1300/1000	1400/1100	1900/1500	2300/1800	2750/2100	3500/2800	4800/3800	
	Cutting head	380/200	480/250	600/400	1000/800	1300/1000	1400/1100	1900/1500	2300/1800	2750/2100	3500/2800	3500/2800	
	steel scrap	120/100	150/130	250/200	450/400	600/650	700/600	1000/900	1300/1100	1600/1350	2200/1850	2850/2300	
Complete set of equipment	Rectifier	STML	STOL	STOL	STOL	STOL	STOL	STOL	STOL	STOL	STOL	STOL	
	control cabinet	-4W-C	-7E-C	-7E-C	-9E-C	-14E-C	-14E-C	-19E-C	-19E-C	-25E-C	-32E-C	-38E-C	
	cable reel	TA100-10-2						TA200-15-2					
	cable connector	DI102						DL-202					

CTY Wet Permanent Magnetic Pre-Separator

Features

1. The feeding box is equipped with a uniform material device to ensure that the material entering the tank is uniform in the length direction of the drum.
2. A wear-resistant layer is adhered to the inner surface of the tank and the outer surface of the magnetic drum to increase wear resistance and prolong its life.
3. The selected ore particle size diameter can reach 16mm.
4. The content of magnetic substances in tailings is significantly reduced, which is 1-3% lower than that of ordinary magnetic separation equipment.
5. The wrap angle of the magnetic system is 138°, the sorting process is lengthened, and the concentrate grade is 2-4% higher.
6. The tank maintains a certain height of the liquid level, which is easy to recover the magnetic substance.



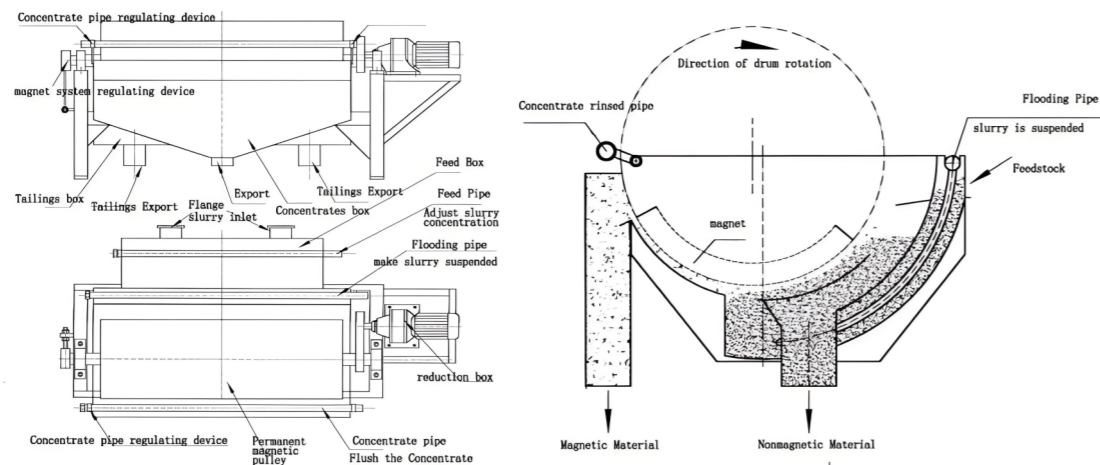
Specification parameter

Model	Drum Size (D*L)mm	Drum Surface Magnetic Induction Density (mT)	Capacity (t/H)	Motor power (kw)	Total Weight (kg)
CTY-1015	Φ1050×1500	Depending on the nature of the mineral	35-65	7.5	3800
CTY-1018	Φ1050×1800		40-75	11	4350
CTY-1021	Φ1050×2100		50-90	11	4900
CTY-1024	Φ1050×2400		60-100	15	5600
CTY-1030	Φ1050×3000		90-125	15	6500
CTY-1218	Φ1050×1800		70-90	15	5100
CTY-1224	Φ1050×2400		90-120	17.5	5230
CTY-1230	Φ1050×3000		120-160	17.5	8100
CTY-1245	Φ1050×4500		150-200	17.5	9800
CTY-1530	Φ1050×3000		140-190	20	9200
CTY-1540	Φ1050×4000		170-240	20	11000

CTS/CTN/CTB Permanent Drum Magnetic Separator

Features

1. The same cylinder can be equipped with three types of tanks, namely downstream tank (CTS), countercurrent tank (CTN), and semi-countercurrent tank (CTB), to adapt to different mineral processing requirements.
2. The co-flow tank is suitable for roughing and concentrating ores with a particle size of 0.1-6mm.
3. The counterflow tank is suitable for roughing and sweeping of ores with a particle size of 0.1-0.6mm, as well as heavy medium recovery in the coal preparation industry.
4. The semi-countercurrent flow tank is suitable for roughing and concentrating ores with a particle size of 0.5-1mm.



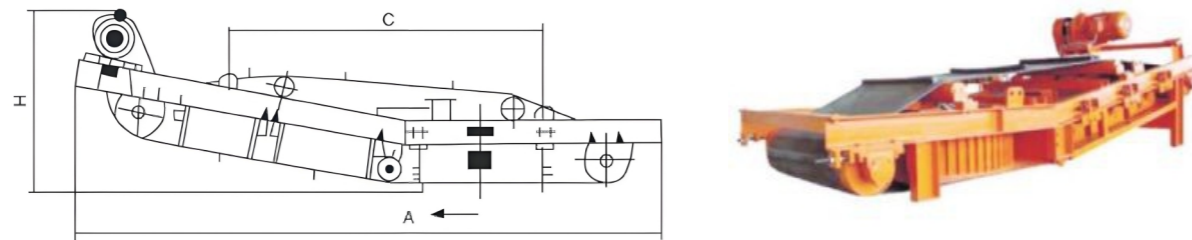
Specification parameter

Model	Drum diameter *length (mm)	Magnetic surface induction intensity mT			Processing Power		Motor power (Kw)	Rotary frequency (r/min)	Weight (kg)
		Magnetic pole geometric center value	sweep area average	Maximum magnetic induction intensity	T/h	m3/h			
CTS-(N.B)-46	400x600	120	130	160	1~3	5	1	45	600
CTS-(N.B)-66	600x600	120	145	170	5~10	16	1	40	750
CTS-(N.B)-69	600x900	120	145	170	8~15	24	1.1	40	830
CTS-(N.B)-612	600x1200	120	145	170	10~20	32	1.1	40	990
CTS-(N.B)-618	600x1800	120	145	170	15~30	48	2.2	40	1330
CTS-(N.B)-712	750x1200	120	155	180	15~30	48	2.2	35	1500
CTS-(N.B)-718	750x1800	120	155	180	20~45	72	3	35	2100
CTS-(N.B)-918	900x1800	148	165	190	25~55	90	3	28	2900
CTS-(N.B)-924	900x2400	148	165	190	35~70	110	4	28	3500
CTS-(N.B)-1018	1050x1800	148	165	190	40~75	120	4	22	4000
CTS-(N.B)-1021	1050x2100	148	165	190	45~88	140	5.5	22	4500
CTS-(N.B)-1021	1050x2100	160	240	280	45~88	140	5.5	22	4500
CTS-(N.B)-1024	1050x2400	148	165	190	52~100	160	5.5	22	5000
CTS-(N.B)-1024	1050x2400	160	240	280	52~100	160	5.5	22	5000
CTS-(N.B)-1030	1050x3000	160	240	280	65~125	200	7.5	22	6200
CTS-(N.B)-1218	1200x1800	148	165	190	47~90	140	5.5	19	5800
CTS-(N.B)-1218	1200x1800	160	240	280	47~90	140	5.5	19	5800
CTS-(N.B)-1224	1200x2400	148	165	190	82~120	192	7.5	19	6200
CTS-(N.B)-1224	1200x2400	160	240	300	82~120	192	7.5	19	6200
CTS-(N.B)-1230	1200x3000	148	165	190	80~150	240	7.5	19	7200
CTS-(N.B)-1230	1200x3000	160	240	280	80~150	240	7.5	19	7200
CTS-(N.B)-1530	1500x3000	180	240	300	90~170	270	11	14	8100
CTS-(N.B)-1540	1500x4000	180	240	300	115~220	350	11	14	9300

QGK Self-Unloading Electromagnetic Machine Iron Remover

Features

1. The magnetic circuit is designed using computer simulation and the magnetic field design is unique, with a large magnetic penetration depth and a strong magnetic field.
2. Cooperate with the metal detector to form an automatic iron detection and removal system without iron leakage.
Intermittent excitation, low energy consumption, stable and reliable performance.
3. The sorting area adopts multi-stage repeated magnetic separation to ensure the minimum amount of ore during iron removal.
4. Automatic iron unloading, simple maintenance, drum-shaped structure, automatic deviation correction function, and special fully sealed bearing seat, suitable for dusty on-site occasions, can achieve long-term trouble-free operation.
5. The product has good compatibility, complete functions, manual and centralized control functions, and can meet the requirements of various occasions.



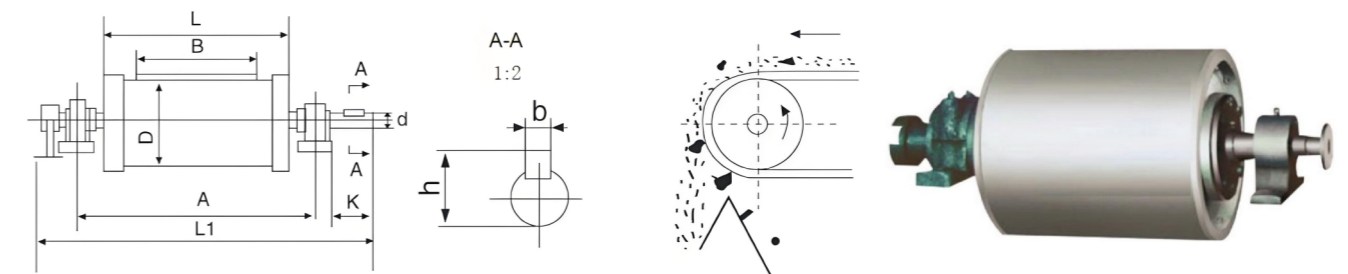
Specification parameter

Model	Adapt to Bandwidth (mm)	Suspension Height (mm)	Average Power	Main Excitation power (Kw)	Auxiliary Excitation Power (Kw)	Unloading Bandwidth (mm)	Driving Power for Steel Mills (KW)	Mining driving power (KW)	External Dimensions	Weight (Kg)	Matching Power Box	Cooling Method
QGK-6	650	≤350	≤2.41	≤8	≤13	500	≤3.0	4	3000x850x1000	1480	GLA-6	Natural Cooling
QGK-8	800	≤400	≤3.6	≤10	≤15	650	≤5.5	5.5	3400x1050x1100	2250	GLA-8	
QGK-10	1000	≤450	≤4.2	≤14	≤17	800	≤5.5	7.5	3640x1310x1370	3210	GLA-10	
QGK-12	1200	≤500	≤5.7	≤18	≤26	1000	≤7.5	11	4210x1520x1460	4420	GLA-12	
QGK-14	1400	≤550	≤7.7	≤25	≤30	1200	≤11	15	4500x1740x1481	5850	GLA-14	
QGK-16	1600	≤600	≤8.3	≤30	≤36	1400	≤15	16.5	4650x1840x1500	7210	GLA-16	
QGK-18	1800	≤600	≤9.0	≤35	≤40	1600	≤18.5	18.5	4800x2150x1510	10000	GLA-18	
QGK-20	2000	≤600	≤10.8	≤50	≤42	1800	≤18.5	22	5000x2450x1600	13900	GLA-20	
QGK-20	2000	≤650	≤12.0	≤60	≤44	2000	≤22	22	5000x2860x1900	17000	GLA-22	

RCT Magnetic Pulley Conveyor

Features

1. The magnetic circuit is designed using computer simulation, and the magnetic field is strong and deep.
2. Using high-performance magnetic materials, it has low demagnetization rate and no power consumption.
3. The roller shaft is removable and easy to maintain. Automatic unloading of iron, low failure rate.
4. The width of the pulley, shaft diameter, and length are based on the customer's requirements.

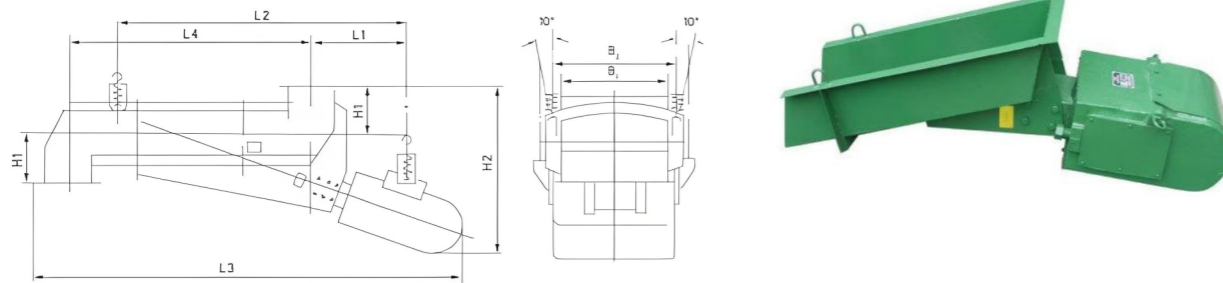


Model	Magnetic induction intensity of the drum surface (GS)	Material Depth (≤mm)	Drum diameter (mm)	Drum length (mm)	Belt speed (≤ m/s)	Appearance size (mm)								
						A	B	D	L	L1	k	d	h	b
RCT-32/40	1500-3000	40	320	400	2.5	728	400	320	500	930	100	45	48.5	14
RCT-32/50	1500-3000	40		500		850	500	320	600	1030	100	50	53.5	14
RCT-32/65	1500-3000	40		650		1000	650	320	750	1280	115	65	69	18
RCT-40/50	1500-3500	60	400	500		850	500	400	600	1097	115	55	60	16
RCT-40/65	1500-3500	60		650		1000	650	400	750	1280	135	65	69	18
RCT-50/50	1500-3800	70	500	500		850	500	500	600	1097	115	55	60	16
RCT-50/65	1500-3800	70		650		1000	650	500	750	1280	135	70	76	20
RCT-50/80	1500-3800	70		800		1300	800	500	950	1580	135	70	76	20
RCT-65/80	1500-4000	80	650	800		1300	800	650	950	1661	175	70	76	20
RCT-65/100	1500-4000	80		1000		1500	1000	650	1150	1860	175	90	97	24
RCT-65/120	1500-4000	80		1200	1750	1200	650	1400	2195	215	110	119	32	
RCT-80/80	1500-4200	100	800	800	1300	800	800	950	1661	175	90	76	24	
RCT-80/100	1500-4200	100		1000	1500	1000	800	1150	1954	215	90	97	24	
RCT-100/120	1500-4500	120	1000	1200	1750	1200	1000	1400	2270	255	110	119	32	
RCT-100/140	1500-4500	120		1400	2000	1400	1000	1600	2446	255	110	119	32	

GZ Electromagnetic Vibration Feeder

Features

1. The capacity of transportation can be adjusted.
2. Small structure, lightweight, convenient installation.
3. No moving parts, simple maintenance, and little consumption.
4. It can adjust the feeding amount steplessly and optimize the production process.
5. Centralized control and automatic control.



Type	Model	Productivity ≤ T/h		Material Size Smm	Double-amplitude (mm)	Voltage ~V	Current(A)		Power Kw	Control cabinet model	Weight kg	Appearance size mm							
		Level 0°	-10°				Working Current	Indication current				L1	L2	L3	L4	H1	H2	B1	B2
Common Mode	Gz0	5	7	50	1.75	220	1.34	1	0.06	XK-I	75	910	600	200	550	100	360	250	230
	Gz1	10	14	50			3	2.3	0.15		146	1175	850	310	660	120	450	300	388
	Gz2	25	35	75			4.58	3.8	0.25		217	1325	850	310	790	150	520	300	496
	Gz3	35	50	85			6.8	5.5	0.35		300	1460	900	350	870	175	580	350	550
	Gz4	50	70	100			8.4	7	0.45		412	1615	1100	413	960	200	645	450	620
	Gz5	100	140	150			12.7	10.6	0.65		656	1815	1200	465	1050	250	765	600	850
Sealed Mode	Gz0F	4	5.6	40	1.75	220	1.34	1	0.06	XK-II	77	264	716	1064	600	107.5	410	200	250
	Gz1F	8	11.2	40			3	2.3	0.15		154	288	903	1420	800	135	520	300	353
	Gz2F	20	28	60			4.58	3.8	0.25		246	300	1092	1695	1000	170	520	400	481
	Gz3F	30	40	50			6.8	5.5	0.35		320	360	1150	1810	1050	190	680	450	510
	Gz4F	40	56	60			6.8	7	0.45		360	451	1306	1940	1100	207.5	750	500	574
	Gz5F	80	112	80			12.7	10.6	0.65		668	528	1483	2190	1200	255	880	700	784

Spiral FG Classifier Spiral Chute Separator

Features

1. Classifiers mainly include four types of classifiers high weir type single helix and double helix, and submerged single helix and double helix classifiers.
2. Avoid frequent maintenance and reduce wear of large and small gears.
3. Improve operating efficiency, save electricity, and reduce energy consumption.



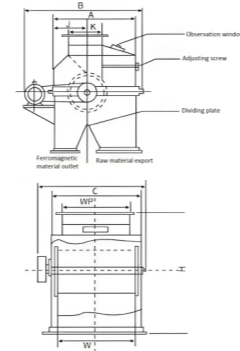
Specification parameter

Model	Spiral Diameter (mm)	Length of pool (mm)	Throughput (t/d)		Motor Power (Kw)		Appearance size (mm)
			Return sand amount	Overflow volume	Drive	Lift	
FG-500	500	4500	135-210	32	1.5		6409x712x1599
FG-750	750	5500	340-570	65	3		630x1250x1780
FG-1000	1000	6500	675-1080	110	7.5		7100x1330x2390
FG-1200	1200	6500	1170-1870	155	7.5	0.4	7560x1572x2328
FG-1500	1500	8300	1830-2740	235	11	0.4	9740x2000x4100
FG-2000	2000	8400	3240-5400	400	11	2..8	10000x2570x4468
FG-2400	2400	9200	4650-7450	580	11=15	2.8	10800x2980x4700
2FG-1200	1200	6500	2340-3740	310	5.5x2	0.4x2	8060x3400x3100
2FG-1500	1500	8300	3660-5480	470	7.5x2	0.4x2	9740x3630x4050
2FG-2000	2000	8400	6480-10800	800	11x2	2.8x2	10000x4600x4700
2FG-2400	2400	9200	9300-14900	1160	15x2	2.8x2	10800x5400x4700
2FG-0030	3000	12500	14600-23400	1785	18.5x2	4x26	15600x6640x6350

CXJA Magnetic Separation Equipment

Features

1. Its internal structure adopts the latest advanced technology from Japan. The magnetic system is composed of super strong permanent magnet boron material, which has a strong magnetic field, and large suction force, and can effectively remove iron from fine powders.
2. It has the characteristics of a high iron rate, energy saving, easy maintenance, and convenient use.
3. This machine can adjust the feeding amount and is suitable for different material particle size requirements.
4. Products are widely used in glass, ceramics, cement, abrasives, refractory materials, carbon black, grain, feed, chemical industry, non-metallic mineral processing and other industries.



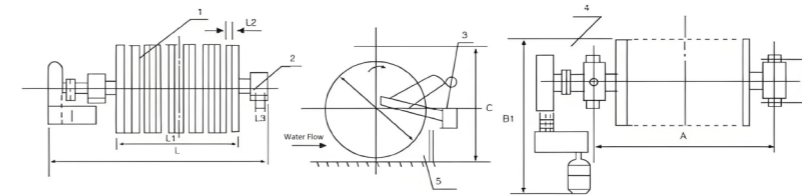
Specification parameter

Model	Material Depth (≤mm)	Magnetic Field Width WP(mm)	Magnetic Intensity ≥ mT	Driving power ≤ Kw	Belt speed (≤ m/s)	Weight (kg)	Appearance size (mm)						
							A	B	C	D	E	F	G
CXJA-4040	400	300	17-82	0.6/2.5	1.1	310	650	950	535	890	865	270	250
CXJA-4050	500	400		0.8/3.5		360			635	990			
CXJA-4060	600	500		1/5		410			735	1090			
CXJA-4075	750	650		1.5/8		480			885	1240			
CXJA-4095	950	600		1.8/10		590			1085	1440			
CXJA-5050	500	750	0.8/5	0.8/5	473	790	1140	640	1030	996	340	270	
CXJA-5060	600	500	1/8	555	740			1130					
CXJA-5075	750	650	1.2/10	625	890			1280					
CXJA-5095	950	850	1.8/20	720	1090			1480					
CXJA-5110	1100	950	2/30	825	1250			1630					
CXJA-6060	600	500	1/6	680	940	1290	750	1155	1150	400	340		
CXJA-6075	750	650	1.2/10	825			900	1315					
CXJA-6095	950	850	1.8/20	910			1100	1515					
CXJA-6110	1100	950	2/30	1035			1250	1665					
CXJA-6130	1300	1150	2.5/40	1200			1450	1865					

Disc Type Tailing Re Claimer Recovery Separator Machine

Features

1. It has high recycling efficiency, small size, easy layout, large processing capacity, and significant economic benefits.
2. It is suitable for re-sorting waste tailings, turning waste into treasure, extracting concentrate, and reducing environmental pollution.
3. The iron concentrate is directly recovered from the tailings of the magnetic separation plant, iron scale is recovered from the wastewater of the steel rolling mill, and the iron concentrate is selected from the tailings accumulated for many years.
4. Sort iron ore from inland river beaches or sea sand mines, and sort weakly magnetic iron ores such as iron oxide ore.



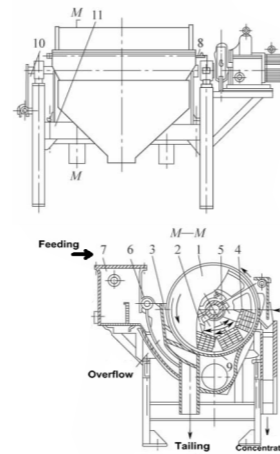
Specification parameter

Model	Specification	Working area(m ²)	Power (Kw)	Number of rings	Surface magnetic induction (mT)	Recovered ore volume (T/h)	Weight (Kg)
8004	800x4	8	2.2	4	170-180	100	1600
8006	800x6	10	3	6	170-180	150	2200
8008	800x8	12	4	8	170-180	200	2800
8010	800x10	15	5.5	10	170-180	240	3400
8012	800x12	18	5.5	12	170-180	260	4200
1008	1000x8	15	4	8	170-180	240	3500
1508	1500x8	20	5.5	8	170-180	280	4500

NCTB Concentrated Dehydration-Wet Type Drum Magnetic Separator

Features

1. The concentrate discharge has a high ore concentration.
2. The magnetic system adopts a large wrapping angle design, which extends the length of the selection area and the unloading time.
3. The optimized design of the tank body optimizes the ore discharge clearance and ore discharge height of the tank body. The concentrate discharge concentration reaches more than 68% and the recovery rate is high.
4. The magnetic system adopts a high gradient design and a large wrapping angle structure, which effectively controls the grade of magnetic separation tailings and has a high recovery rate. The tailings can be dumped directly during the concentration operation.



Specification parameter

Model	Cylinder Size	Magnetic Induction Intensity on Cylinder Surface	Processing Power		Motor Power (Kw)	Cylinder Speed(r/min)	Total Machine Weight(Kg)
			t/h	m³/h			
NCTB-918	900 x 1800	According to Ore Grade Determine the Magnetic Induction Intensity	25-45	70-120	4	26	3300
NCTB-1018	1050 x 1800		40-60	130-200	5.5	22	4300
NCTB-1021	1050 x 2100		50-70	150-240	5.5	22	4900
NCTB-1024	1050 x 2400		60-80	160-280	5.5	22	5600
NCTB-1030	1050 x 3000		80-120	240-400	7.5	21	7500
NCTB-1218	1200 x 1800		60-75	160-280	11	17	5900
NCTB-1224	1200 x 2400		80-110	240-380	11	17	6800
NCTB-1230	1200 x 3000		100-140	260-400	11	17	8200
NCTB-1236	1200 x 3600		120-160	300-550	15	17	9200
NCTB-1240	1200 x 4000		130-170	300-600	15	17	10500
NCTB-1245	1200 x 4500		150-200	380-660	15	17	12000
NCTB-1530	1500 x 3000		100-180	280-480	11	14	11000
NCTB-1540	1500 x 4000		150-200	320-540	15	14	13500
NCTB-1545	1500 x 4400		180-240	400-650	18.5	14	16500
NCTB-1550	1500 x 5000	210-280	500-750	18.5	14	19800	



Application

